

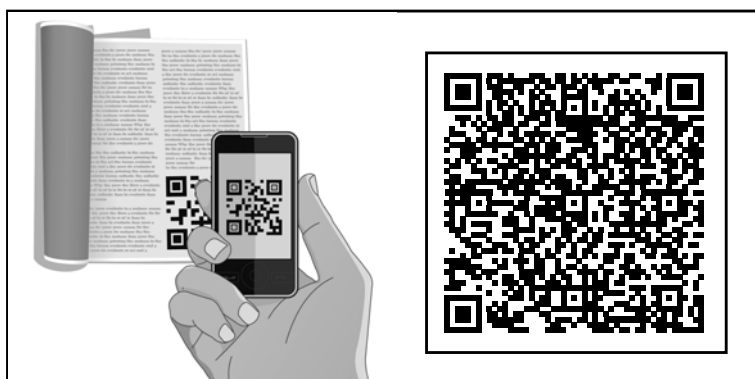
Katherm HK Baseboard 1.43

Baseboard heating and cooling with EC cross-flow fan



Assembly and Installation Instructions

Keep these instructions in a safe place for future use!



Kampmann.de/installation_manuals

Explanation of symbols:



Caution! Danger!

Non-adherence to this manual can result in serious injury or damage to persons or property.



Danger of electrocution!

Non-adherence to this manual can result in serious injury or damage to persons or property by electrocution.

Please read this manual prior to commencing installation of these units!

All persons involved in the installation, commissioning and use of this product are obliged to pass this manual onto other trades working in parallel or subsequently on this equipment up to and including the end user or operator of the equipment. Please retain this manual until the equipment is finally decommissioned!

Amendments can be made to the content or design of this manual without prior notification!

Table of contents

1. Correct and proper use	4
2. Safety information	5
3. Assembly and waterside connections	6
4. Water connections	8
5. Maintenance	9
6. Electrical connection/electromechanical controls	12
6.1 Wire electrical connections	12
6.2 Wiring diagram	13
6.2.1 Electromechanical control system	13

1.43 Katherm HK Baseboard - Cross-flow fan convection with compact EC motor

Ready-to-install baseboard convectors

Installation instructions



1. Correct and proper use

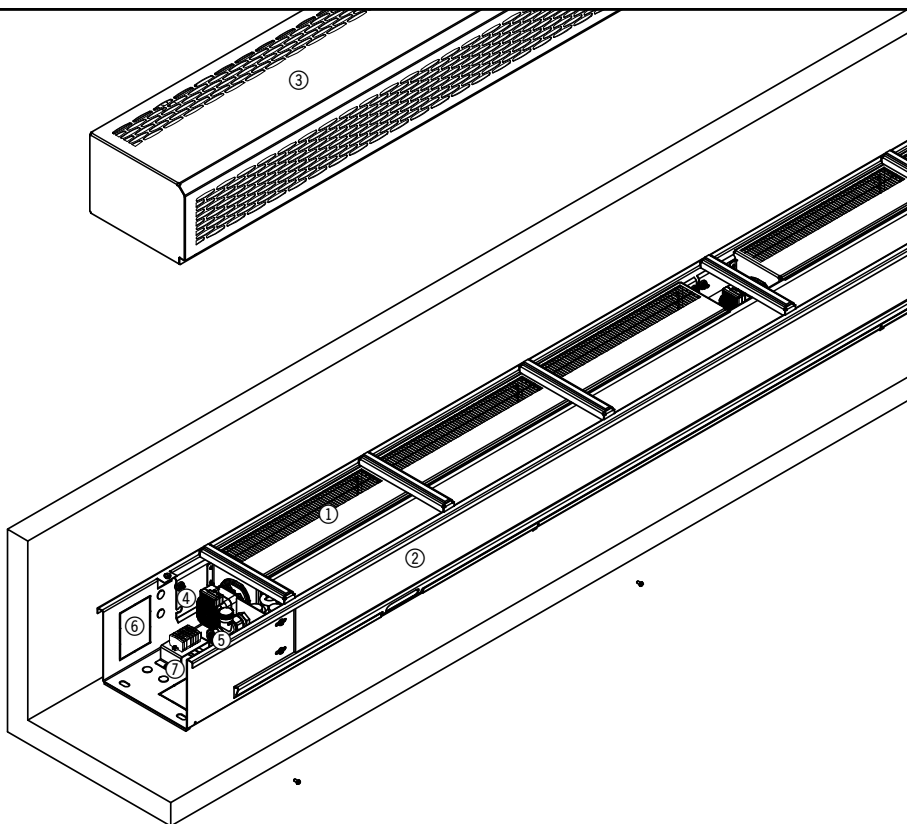
Kampmann **Katherm** HK Baseboard units are manufactured in accordance with the state of the art and recognised safety regulations. The use of these units can nevertheless result in danger to persons or damage to the equipment or other property if they are not installed and operated correctly and properly or are not used correctly.

Katherm HK Baseboard units are intended solely for use indoors (for instance in residential properties, offices, showrooms etc). They should not be used in damp areas, like swimming pools or outdoors. The units should be prevented from becoming wet or damp during installation. If in doubt, please contact the manufacturer. Any use beyond the aforementioned use shall be deemed to be improper and any damage resulting from this will be the sole responsibility of the operator of the equipment. Correct and proper use also includes adherence to the installation instructions given in manual.

The installation of this product requires technical knowledge of heating, cooling and electronics. This knowledge is generally taught as part of a course in one of the vocational fields listed in section 2 and is not described separately here. Connection faults or modifications can lead to damage to the unit! The manufacturer shall not be liable for any damage due to any faulty connection or/and improper handling.

Katherm HK Baseboard

- ① Compact EC cross-flow fan
- ② High-output convector Cu/Al
- ③ casing
- ④ Flow connection, 1/2", Eurokonus
- ⑤ Return connection, 1/2", Eurokonus
- ⑥ Pipe and cable entries
- ⑦ Terminal strip





2. Safety information

The installation and assembly, as well as maintenance of electrical equipment should only be performed by a qualified electrician in accordance with VDE guidelines. The units should be wired in accordance with applicable VDE regulations and guidelines issued by the relevant power supply company. Non-adherence to these regulations and the information contained in the installation manual can result in malfunctions with consequential damage and danger to personnel. There is a risk of fatal injury if the wires are swapped when connecting the units! Disconnect all parts of the system from the mains prior to wiring and servicing the units and prevent them from being reconnected! The unit should only be connected to fixed cables. Please read this manual in full to ensure correct and proper installation.

It is imperative that the following safety information is adhered to:

- Disconnect all parts of the system that you are working on from the mains power supply.
- Ensure that the equipment cannot be accidentally re-connected!
- Before commencing with the installation/servicing of the unit, wait until the fan has reached a standstill after the unit has been switched off.
- Attention! Pipes, casings and fittings can become very hot depending on the operating mode!
- Personnel should be qualified and possess adequate knowledge of the following:
 - Safety prevention and accident prevention
 - Guidelines and recognised technical regulations, such as VDE guidelines
 - DIN and EN standards
 - Accident prevention regulations VBG, VBG4, VBG9a
 - DIN VDE 0100, DIN VDE 0105
 - EN 60730 (Part 1)
 - Technical regulations issued by the relevant power supply companies

Modifications to the equipment

Do not perform any modifications, conversions or additions to Katherm HK Baseboard units without consulting the manufacturer, as this could impair the safety and correct operation of the units.

Do not carry out any work on the equipment that is not described in this manual. Fittings and cabling should be appropriate for the system!



Openings are provided on the floor duct for a potential balancing line.

1.43 Katherm HK Baseboard - Cross-flow fan convection with compact EC motor

Ready-to-install baseboard convectors

Installation instructions



3. Assembly and waterside connections

- Remove outer film and packaging cardboard.



Fig. Katherm HK Baseboard in correct assembly position

- Place the Katherm HK Baseboard unit against the wall as shown.



Fig. Loosening the screws

- Loosen the screws on the front of the casing.

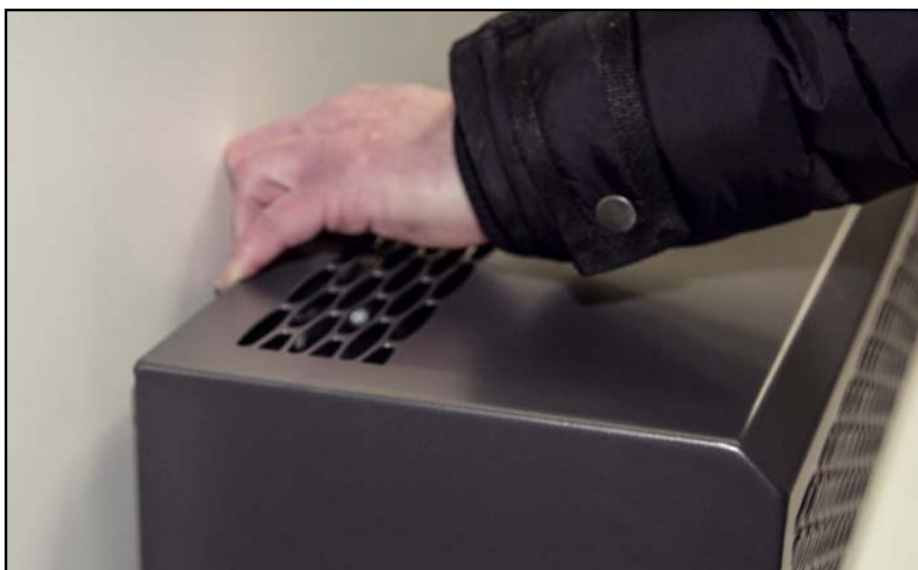


Fig. Demounting of the casing

- Pull the casing towards you and lift it carefully.

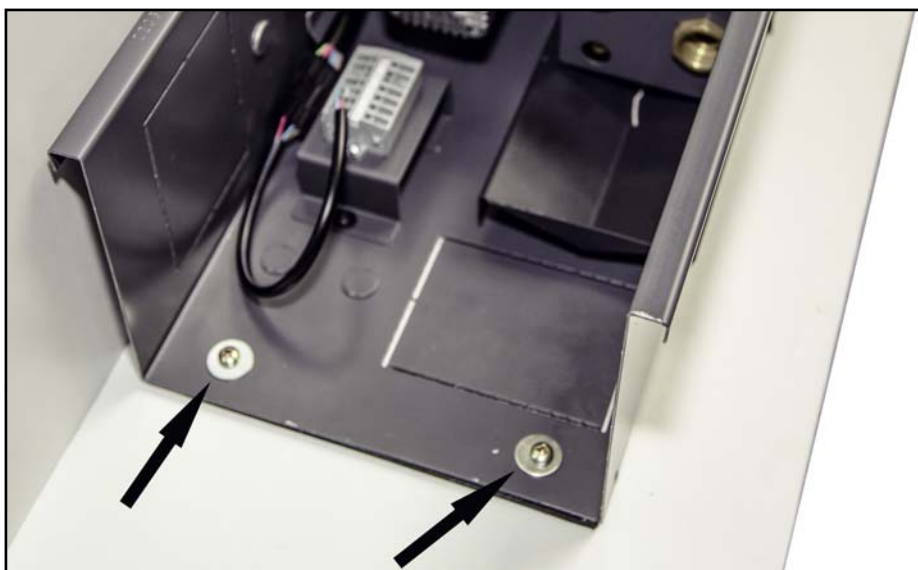


Fig. Fastening points of the mounting frame.

- Fix the mounting frame to the floor on the left and right hand side.
- Then fit the flow and return pipework.
- Perform a pressure test.
- Mount the casing back on the mounting frame in reversed order.
- Ensure that this manual is clearly visible to subsequent trades on this equipment.

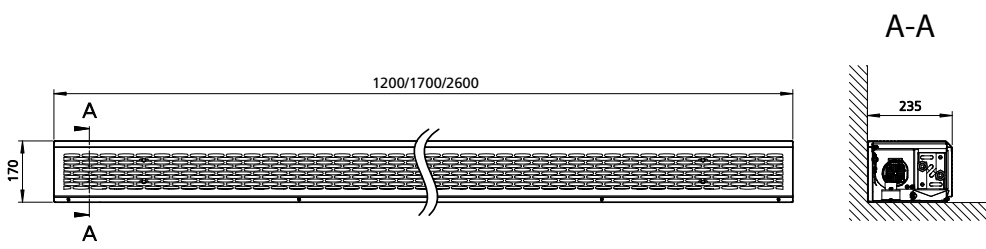
1.43 Katherm HK Baseboard - Cross-flow fan convection with compact EC motor

Ready-to-install baseboard convectors

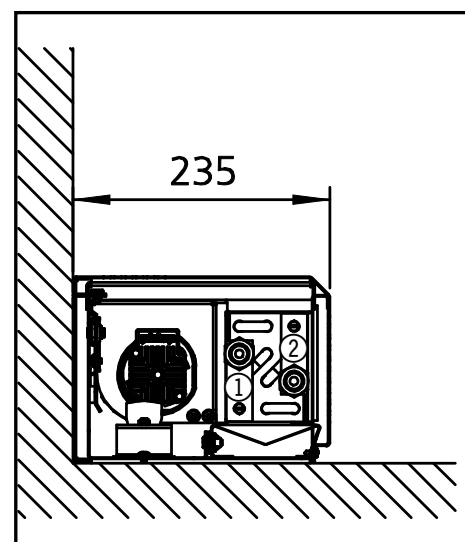
Installation instructions

4. Water connections

Katherm HK Baseboard

Design	Room-side pipe connections
Katherm QK Baseboard ① Flow ② Return	 <p>A-A</p> <p>1200/1700/2600</p> <p>170</p> <p>235</p>

Detail



5. Maintenance

Important note

Katherm HK Baseboard units ducts should only be maintained and serviced by trained and qualified personnel and noting the information provided in the installation and operating manual, as well as all applicable regulations. Regular servicing and maintenance is needed to ensure the correct operation and performance of Katherm HK Baseboard units.

Fans

- Check the crossflow fans every six months for dirt and damage (visual inspection).
- Clean the fan cylinder carefully with a cloth if dirty.

Heat exchanger

- Check the integral heat exchanger every six months for dirt and possible damage. A visual inspection will suffice here too.
- If dirty, carefully vacuum the heat exchanger.

1.43 Katherm HK Baseboard - Cross-flow fan convection with compact EC motor

Ready-to-install baseboard convectors

Installation instructions



Condensate drip tray

- Remove the drain hose from the condensate drip tray.



Fig. Pulling out the condensate drip tray

- Carefully pull out the condensate drip tray.

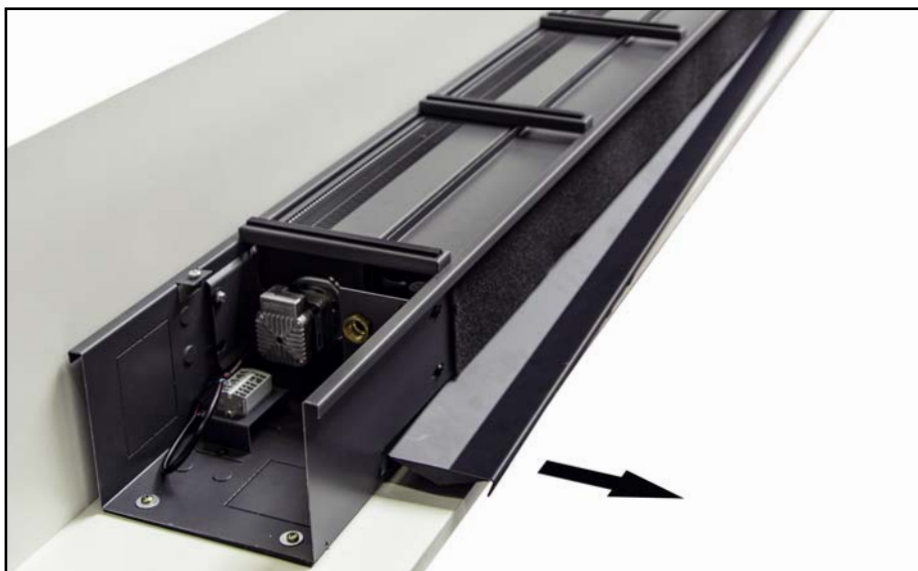


Fig. Tilting of the condensate drip tray

- Tilt the condensate drip tray as shown to fully remove the condensate drip tray.
- Inspect the condensate drip tray and clean it if necessary.



Fig. Snap joint connection of the condensate drip tray

- Reinsert the condensate drip tray in reversed order. When reinserting the condensate drip tray, make sure to click the snap joint connection into place.

1.43 Katherm HK Baseboard - Cross-flow fan convection with compact EC motor

Ready-to-install baseboard convectors

Installation instructions



6. Electrical connection/electromechanical controls

6.1 Wire electrical connections

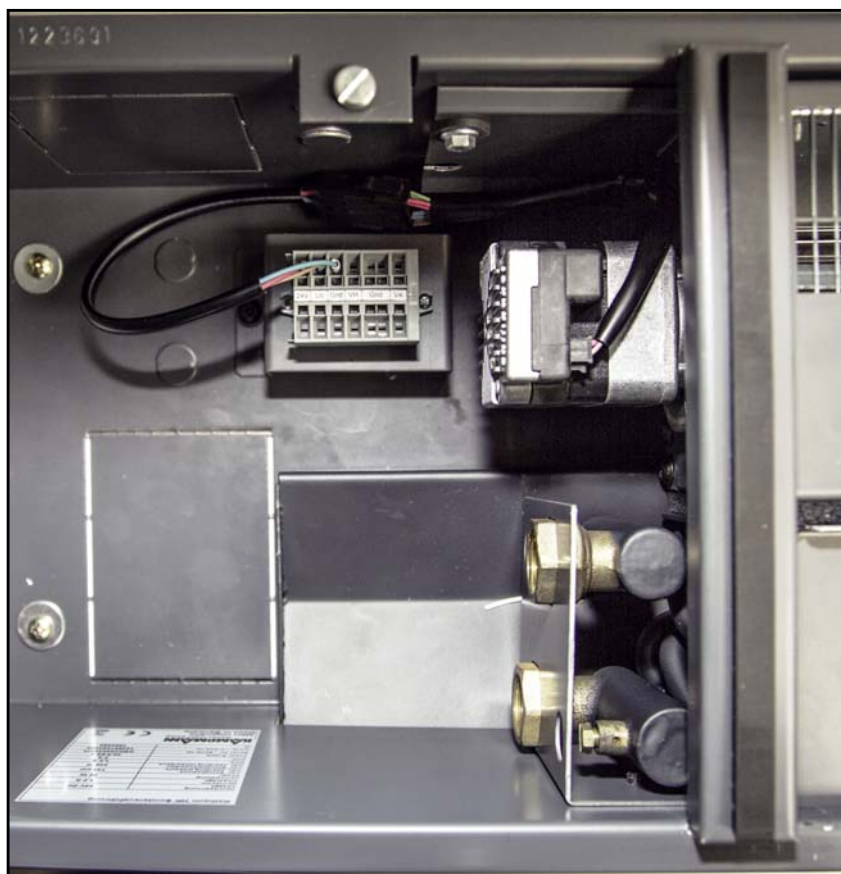
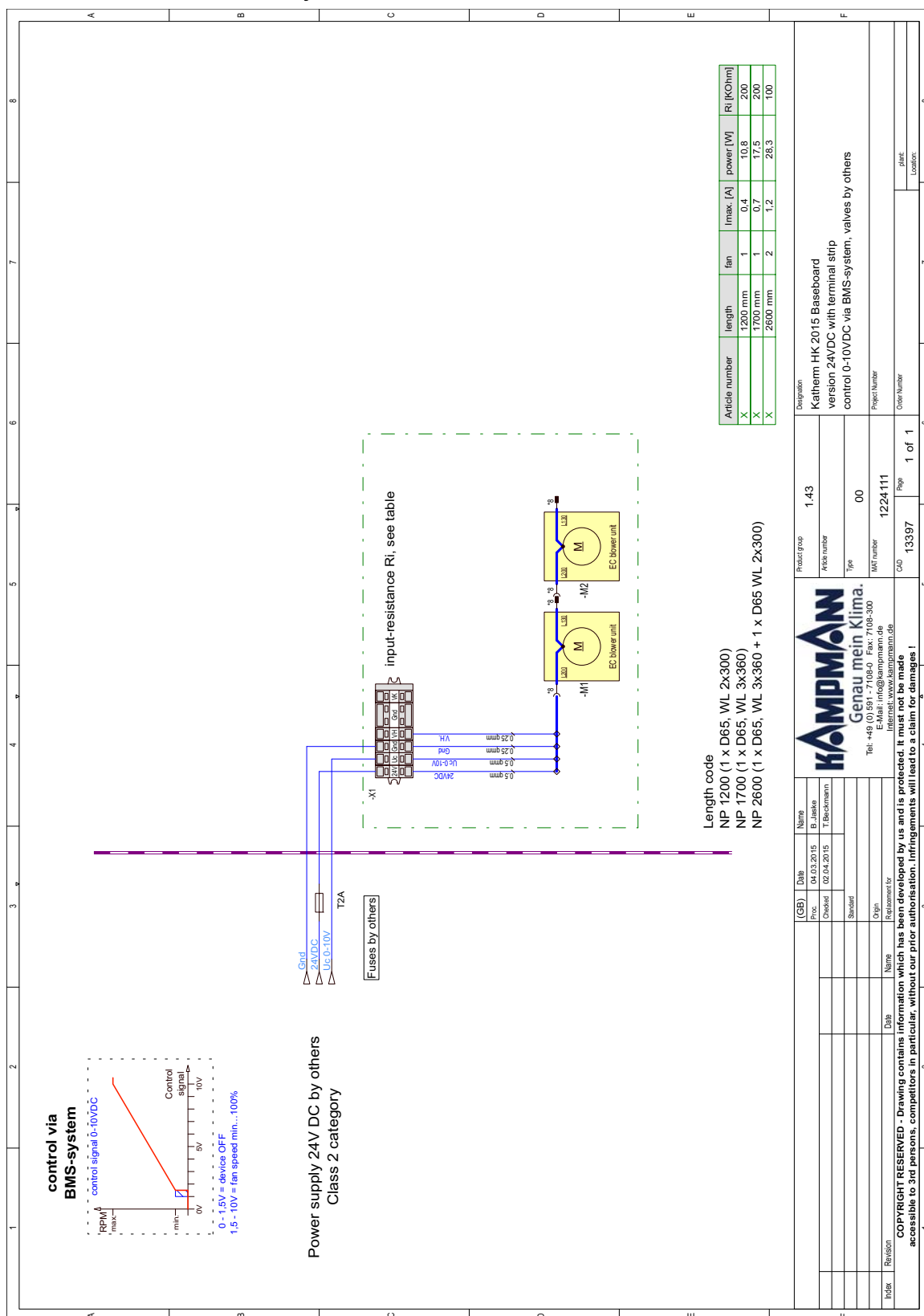


Fig. Katherm HK Baseboard with terminal strip:

- Connect up the cables according to the wiring diagram (provided with the unit).

6.2 Wiring diagram

6.2.1 Electromechanical control system



This authorizes the application of the Certification Mark(s) shown below to the models described in the Product(s) Covered section when made in accordance with the conditions set forth in the Certification Agreement and Listing Report. This authorization also applies to multiple listee model(s) identified on the correlation page of the Listing Report.

This document is the property of Intertek Testing Services and is not transferable. The certification mark(s) may be applied only at the location of the Party Authorized To Apply Mark.

Applicant: KAMPMANN GmbH & Co. KG
Address: Friedrich-Ebert-Str. 128-130
49811 Lingen

Manufacturer: KAMPMANN GmbH & Co. KG
Address: Friedrich-Ebert-Str. 128-130
49811 Lingen

Country: Germany

Country: Germany

Party Authorized To Apply Mark: Same as Manufacturer
Report Issuing Office: Intertek Deutschland GmbH, Kaufbeuren

Control Number: **5012818**

Authorized by:

Helene Gustafsson


for L. Matthew Snyder, Certification Manager



This document supersedes all previous Authorizations to Mark for the noted Report Number.

This Authorization to Mark is for the exclusive use of Intertek's Client and is provided pursuant to the Certification agreement between Intertek and its Client. Intertek's responsibility and liability are limited to the terms and conditions of the agreement. Intertek assumes no liability to any party, other than to the Client in accordance with the agreement, for any loss, expense or damage occasioned by the use of this Authorization to Mark. Only the Client is authorized to permit copying or distribution of this Authorization to Mark and then only in its entirety. Use of Intertek's Certification mark is restricted to the conditions laid out in the agreement and in this Authorization to Mark. Any further use of the Intertek name for the sale or advertisement of the tested material, product or service must first be approved in writing by Intertek. Initial Factory Assessments and Follow up Services are for the purpose of assuring appropriate usage of the Certification mark in accordance with the agreement, they are not for the purposes of production quality control and do not relieve the Client of their obligations in this respect.

Intertek Testing Services NA Inc.
545 East Algonquin Road, Arlington Heights, IL 60005
Telephone 800-345-3851 or 847-439-5667 Fax 312-283-1672

Standard(s):	Heating and Cooling Equipment>Valid without technical revision: 01Jan2024< [UL 1995:2015 Ed.5+R:17Aug2018] Heating And Cooling Equipment [CSA C22.2#236:2015 Ed.5]
Product:	Trench Heating / Cooling convectors
Brand Name:	
Models:	<p>Katherm QK may be followed by nano; followed by one to four numbers; followed by 24; followed by three numbers; followed by /; followed by three numbers; followed by /; followed by two to five numbers; followed by R-Rost, L- Rost; followed by one to three numbers; followed by alu. natur elox, steel, wood or brass.</p> <p>Katherm HK may be followed by 2-Lt., 4-Lt.; followed by 24; followed by three numbers; followed by /; followed by three numbers; followed by /; followed by two to five numbers; followed by R-Rost, L- Rost; followed by one to three numbers; followed by alu. natur elox, steel, wood or brass.</p> <p>Baseboard HK. Baseboard QK.</p>

This authorizes the application of the Certification Mark(s) shown below to the models described in the Product(s) Covered section when made in accordance with the conditions set forth in the Certification Agreement and Listing Report. This authorization also applies to multiple listee model(s) identified on the correlation page of the Listing Report.

This document is the property of Intertek Testing Services and is not transferable. The certification mark(s) may be applied only at the location of the Party Authorized To Apply Mark.

Applicant: KAMPMANN GmbH & Co. KG
Address: Friedrich-Ebert-Str. 128-130
49811 Lingen

Manufacturer: Kampmann HVAC Sp. z o. o.
Address: ul. Lotnicza 21f
99-100 Łęczysca

Country: Germany

Country: Poland

Party Authorized To Apply Mark: Same as Manufacturer
Report Issuing Office: Intertek Deutschland GmbH, Kaufbeuren

Control Number: **5017050**

Authorized by:

Matthew Snyder


for L. Matthew Snyder, Certification Manager



This document supersedes all previous Authorizations to Mark for the noted Report Number.

This Authorization to Mark is for the exclusive use of Intertek's Client and is provided pursuant to the Certification agreement between Intertek and its Client. Intertek's responsibility and liability are limited to the terms and conditions of the agreement. Intertek assumes no liability to any party, other than to the Client in accordance with the agreement, for any loss, expense or damage occasioned by the use of this Authorization to Mark. Only the Client is authorized to permit copying or distribution of this Authorization to Mark and then only in its entirety. Use of Intertek's Certification mark is restricted to the conditions laid out in the agreement and in this Authorization to Mark. Any further use of the Intertek name for the sale or advertisement of the tested material, product or service must first be approved in writing by Intertek. Initial Factory Assessments and Follow up Services are for the purpose of assuring appropriate usage of the Certification mark in accordance with the agreement, they are not for the purposes of production quality control and do not relieve the Client of their obligations in this respect.

Intertek Testing Services NA Inc.
545 East Algonquin Road, Arlington Heights, IL 60005
Telephone 800-345-3851 or 847-439-5667 Fax 312-283-1672

Standard(s):	Heating and Cooling Equipment>Valid without technical revision: 01Jan2024< [UL 1995:2015 Ed.5+R:17Aug2018] Heating And Cooling Equipment [CSA C22.2#236:2015 Ed.5]
Product:	Trench Heating / Cooling convectors
Brand Name:	
Models:	<p>Katherm QK may be followed by nano; followed by one to four numbers; followed by 24; followed by three numbers; followed by /; followed by three numbers; followed by /; followed by two to five numbers; followed by R-Rost, L- Rost; followed by one to three numbers; followed by alu. natur elox, steel, wood or brass.</p> <p>Katherm HK may be followed by 2-Lt., 4-Lt.; followed by 24; followed by three numbers; followed by /; followed by three numbers; followed by /; followed by two to five numbers; followed by R-Rost, L- Rost; followed by one to three numbers; followed by alu. natur elox, steel, wood or brass.</p> <p>Baseboard HK. Baseboard QK.</p>

Kampmann.de

Kampmann GmbH
Friedrich-Ebert-Str. 128 - 130
49811 Lingen (Ems)
Germany

T +49 591 7108-0
F +49 591 7108-300
E info@kampmann.de

Kampmann UK Ltd.
Dial House, Govett Avenue
Shepperton, Middlesex, TW17 8AG
Great Britain

T +44 (0)1932 228592
F +44 (0)1932 228949
E info@kampmann.co.uk

