



Trench Heating

Katherm NK

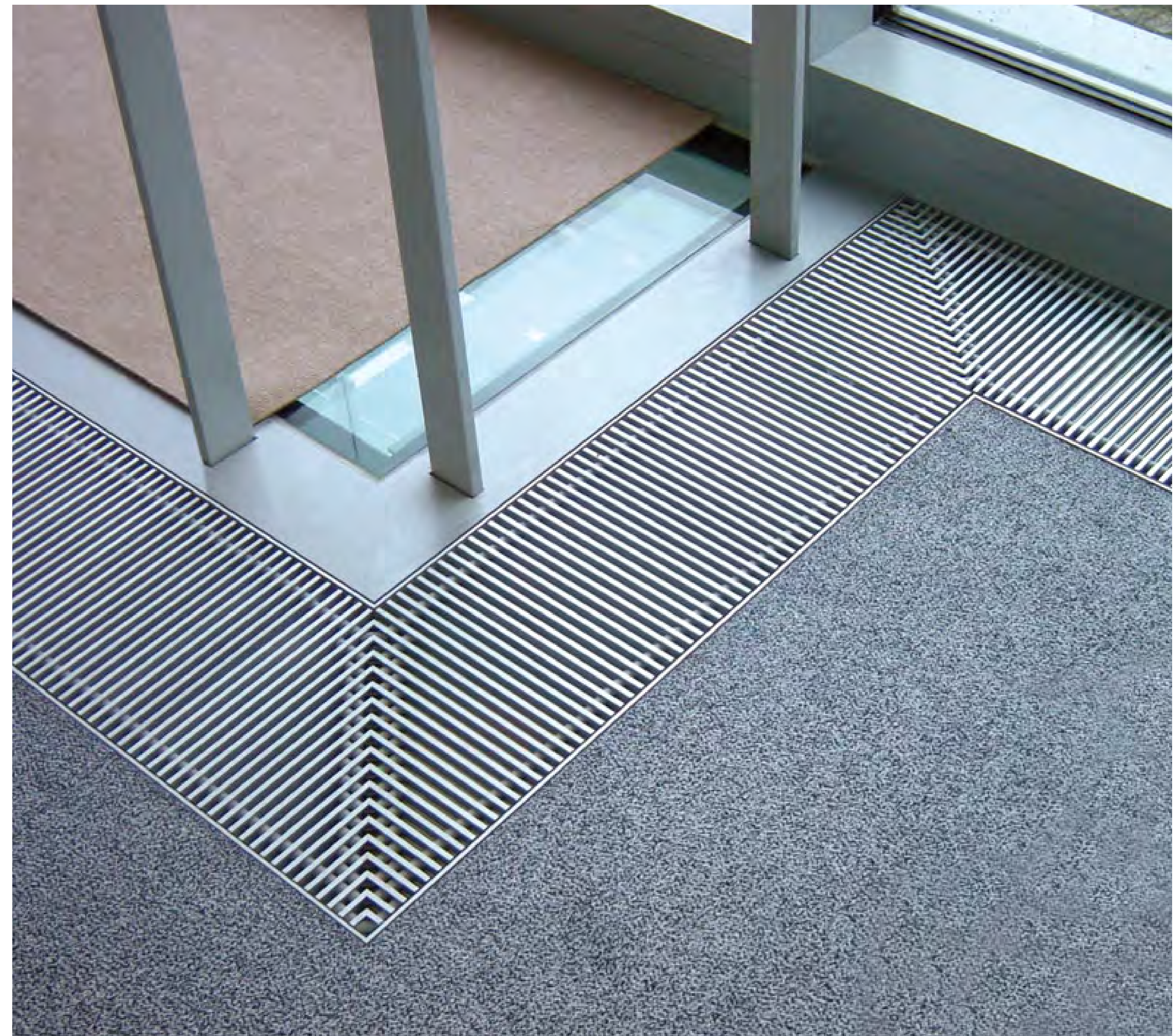
Geared to the future

You are investing in future-proof quality with the Katherm NK. It works efficiently, even with low water temperatures, keeping operating costs to a permanently low level.



Various dimensions

Design can be this easy! Especially if you can choose between five widths, four heights and 22 lengths, as with the NK range.



Tailor-made

Your customer gets the thing you appreciate about Kampmann:
individual made-to-fit trenches for
all façades. Regardless of whether
you need mitred corners, curved
trenches, column cutouts etc.



Advantages



Overview



Details



Performance

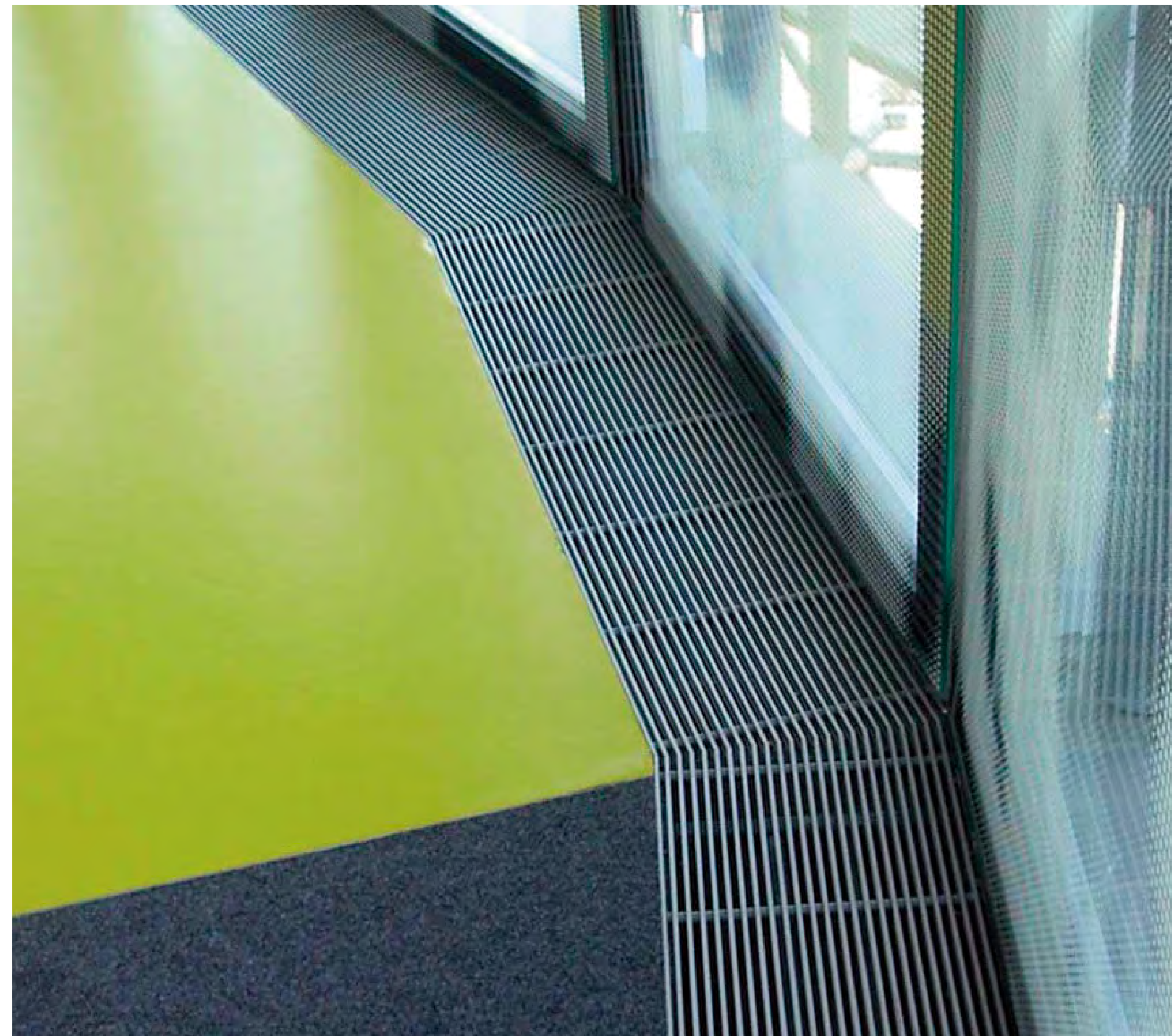


Contact

KAMPMANN
Genau mein Klima.

With a matching frame

The matching frame for every grille finish - all possible for the Katherm NK. The icing on the cake for a perfect look.



Easy installation

Work on site is far easier with the Eurokonus valve connection. Other standard features, such as height adjustment feet and load-bearing raised floor brackets, reduce installation time and thus also costs.



Advantages



Overview



Details



Performance



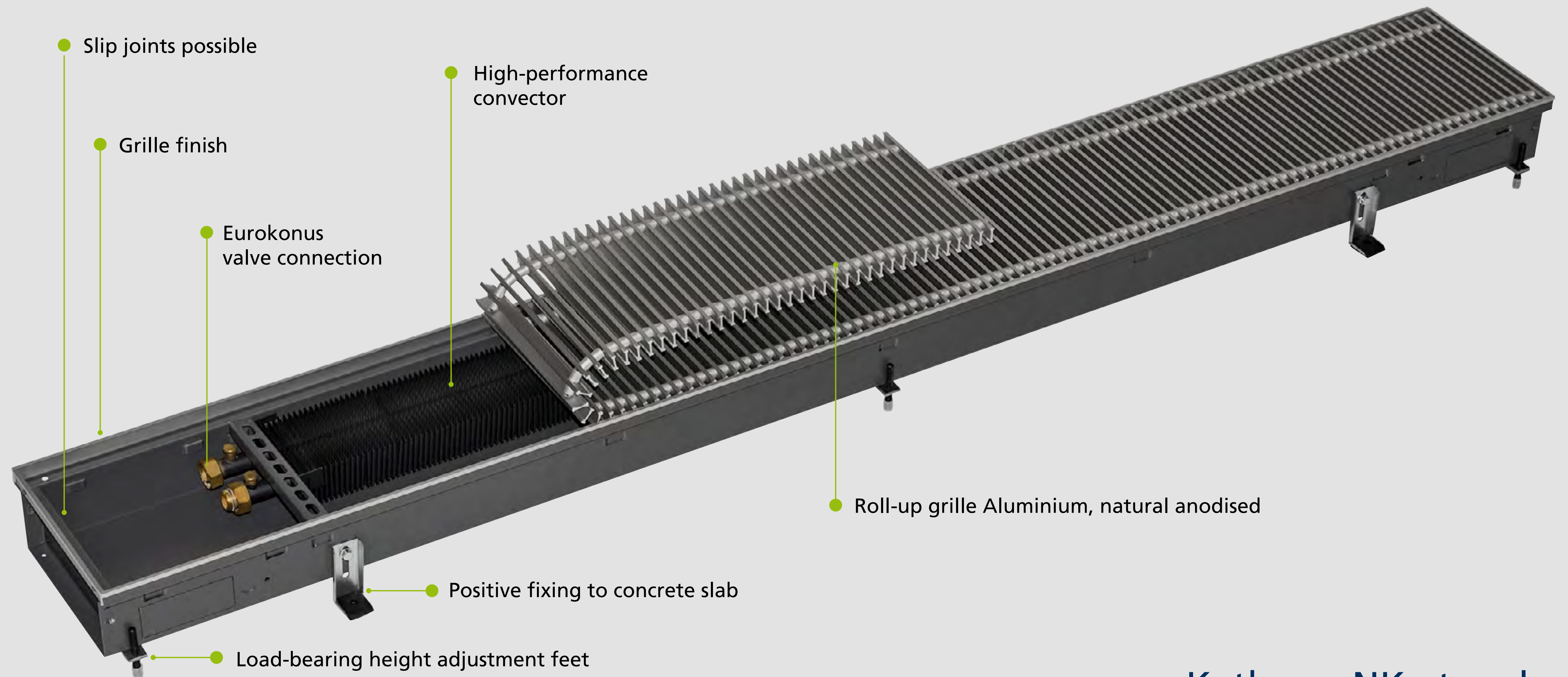
Contact

KAMPMANN
Genau mein Klima.

Design reliably

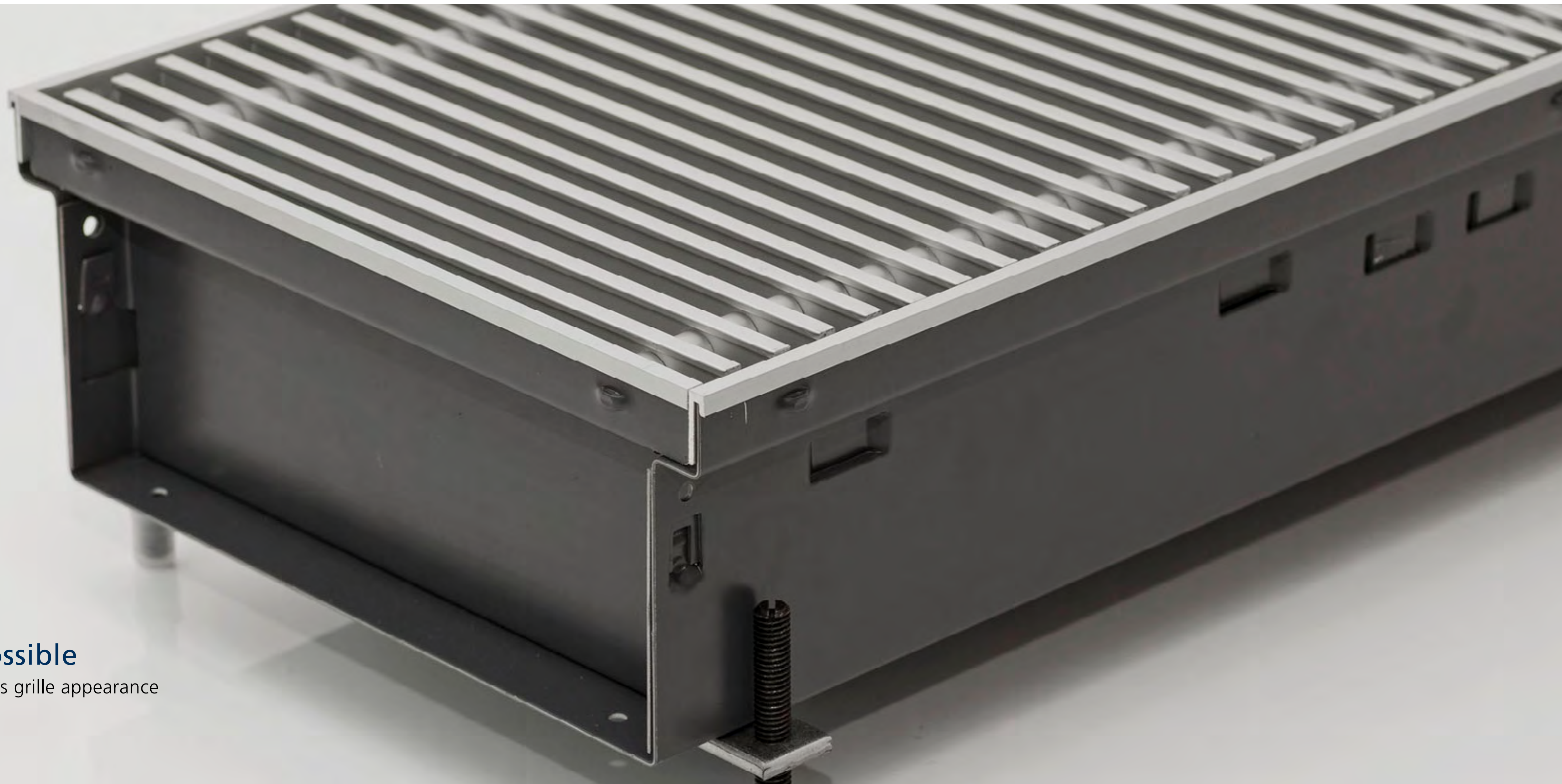
Design our standard trenches with short delivery times. You can also rely on our support for your individual project to find the respective solution.





Katherm NK at a glance





Slip joints possible

► To allow continuous grille appearance





Cover plate

- As visual cover and protection against dirt ingress



Advantages



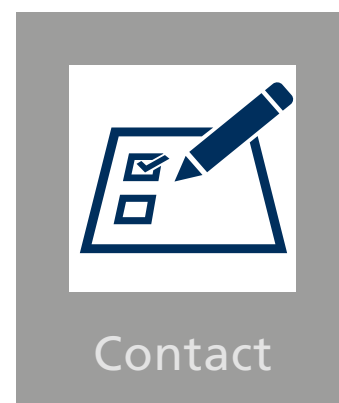
Overview



Details



Performance

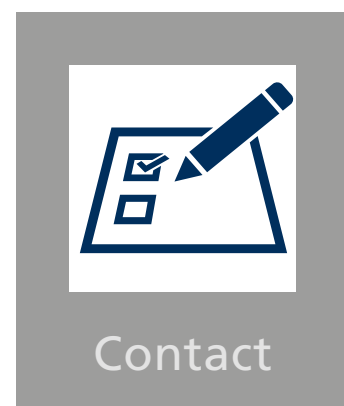


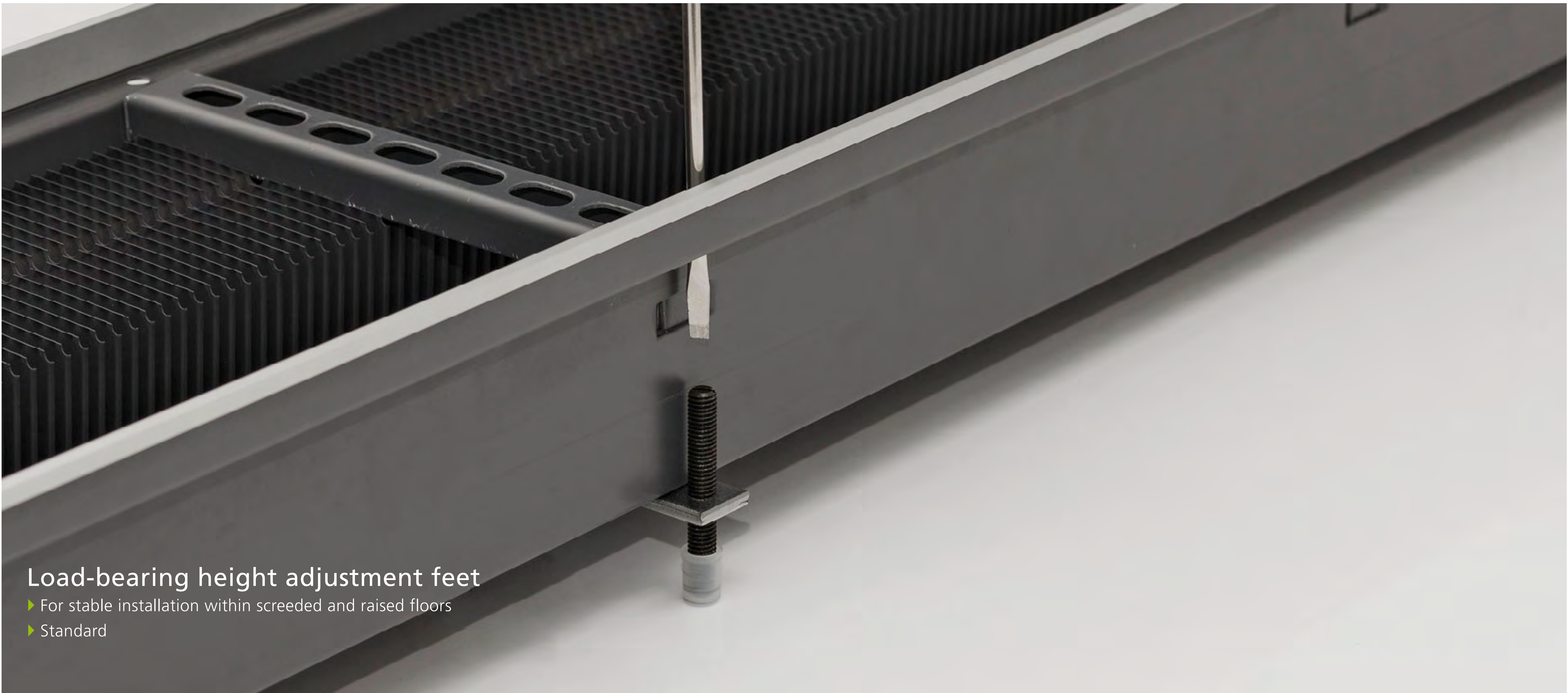
Contact



Coloured frame

► To match grille finish



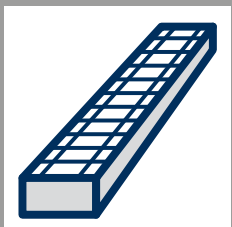


Load-bearing height adjustment feet

- For stable installation within screeded and raised floors
- Standard



Advantages



Overview



Details



Performance



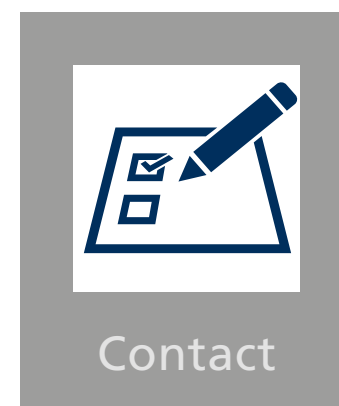
Contact

KAMPMANN
Genau mein Klima.



Positive fixing to concrete slab

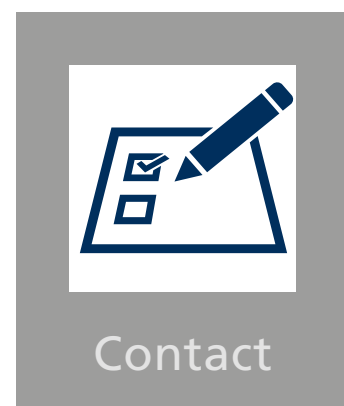
► For stable installation within screeded and raised floors

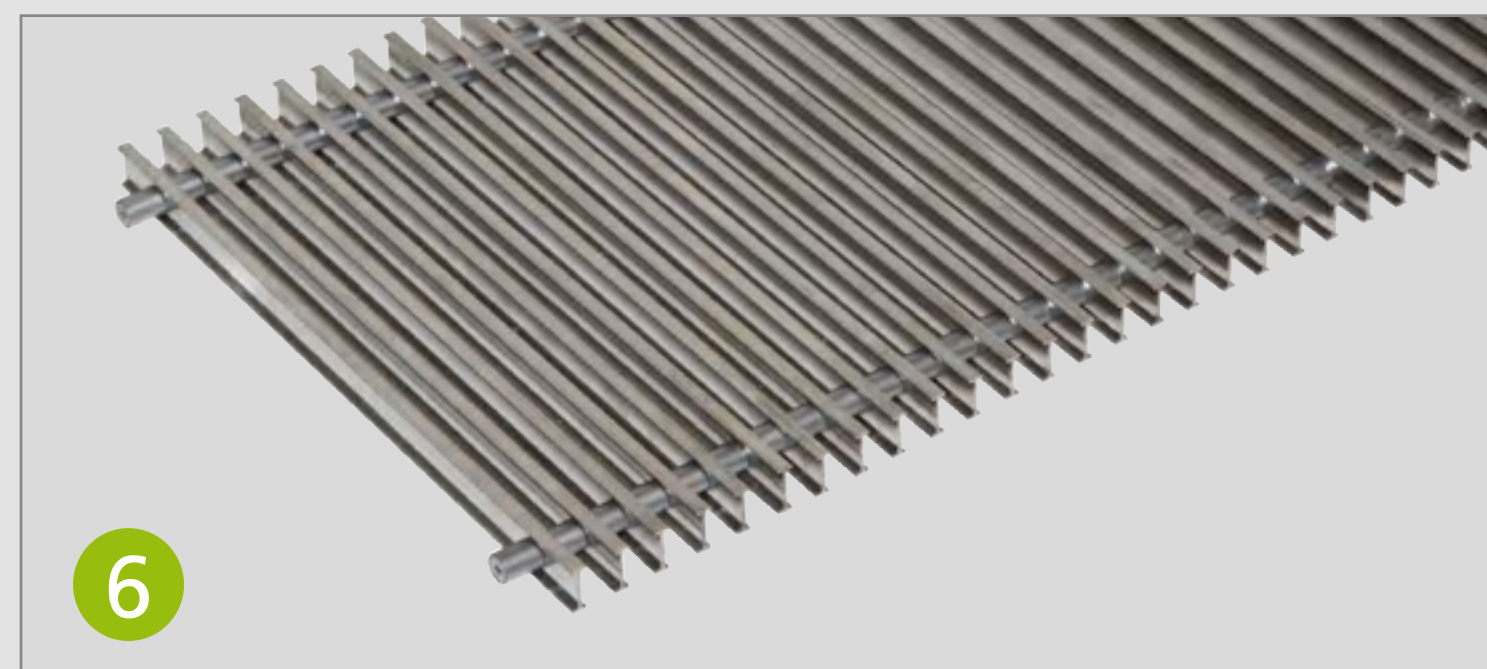
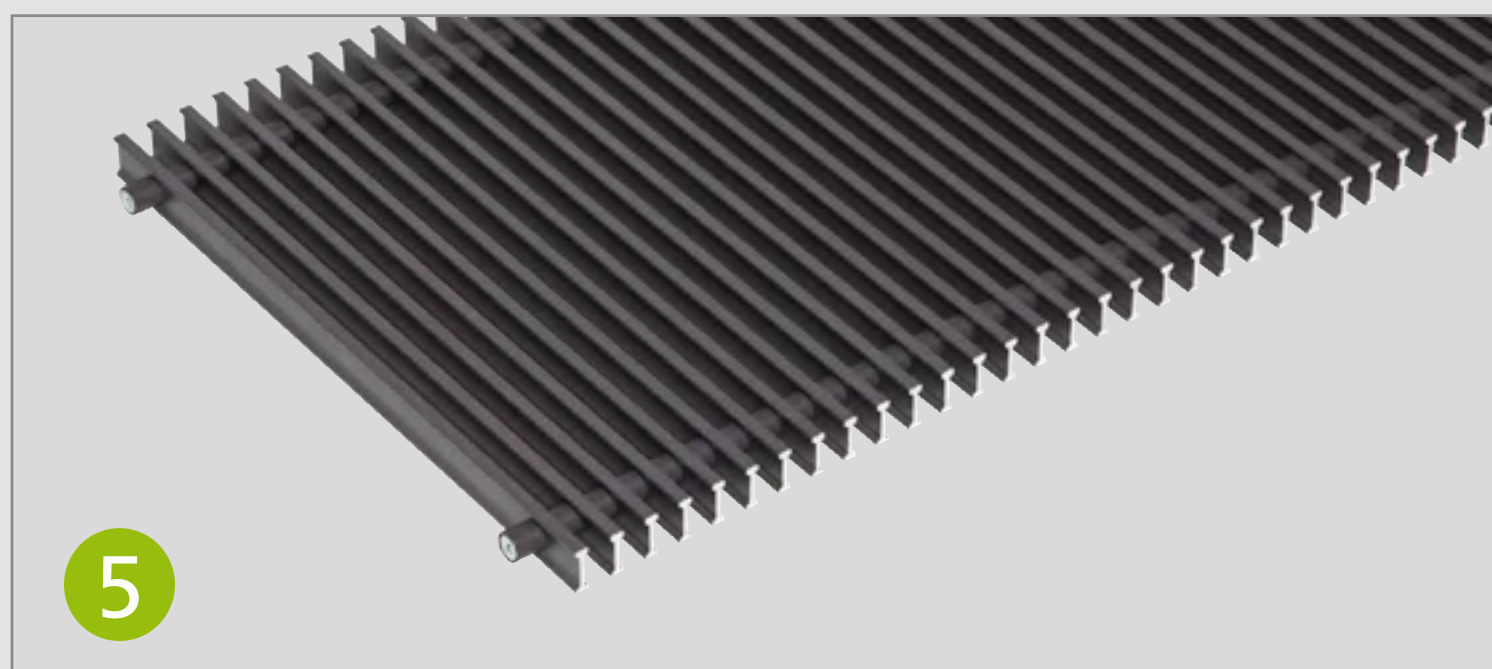
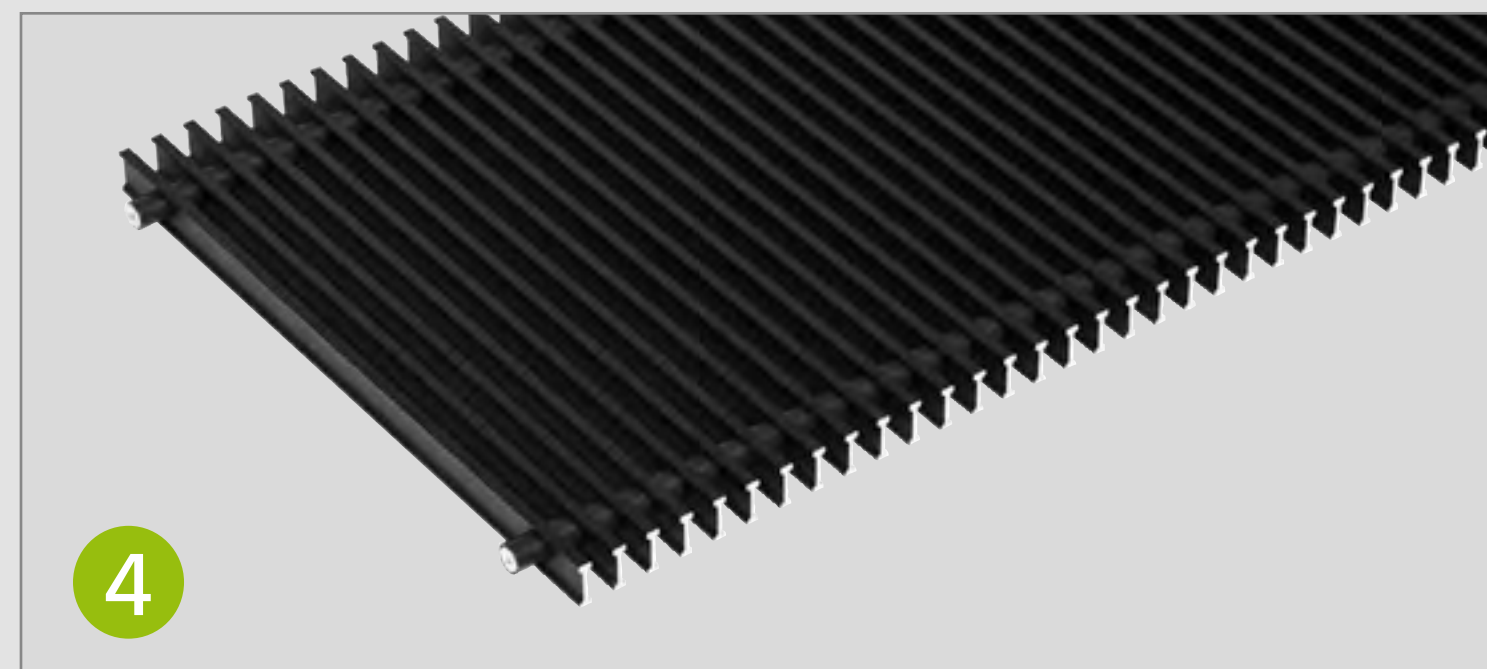
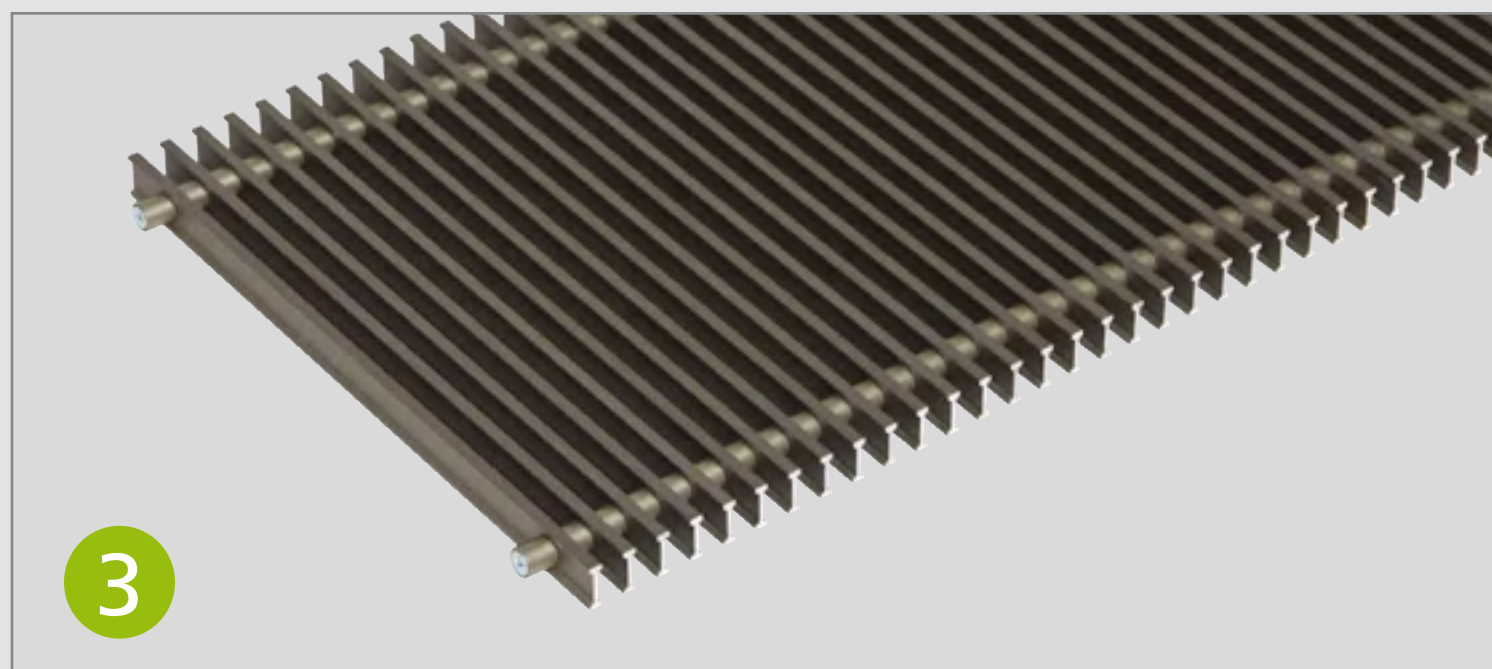
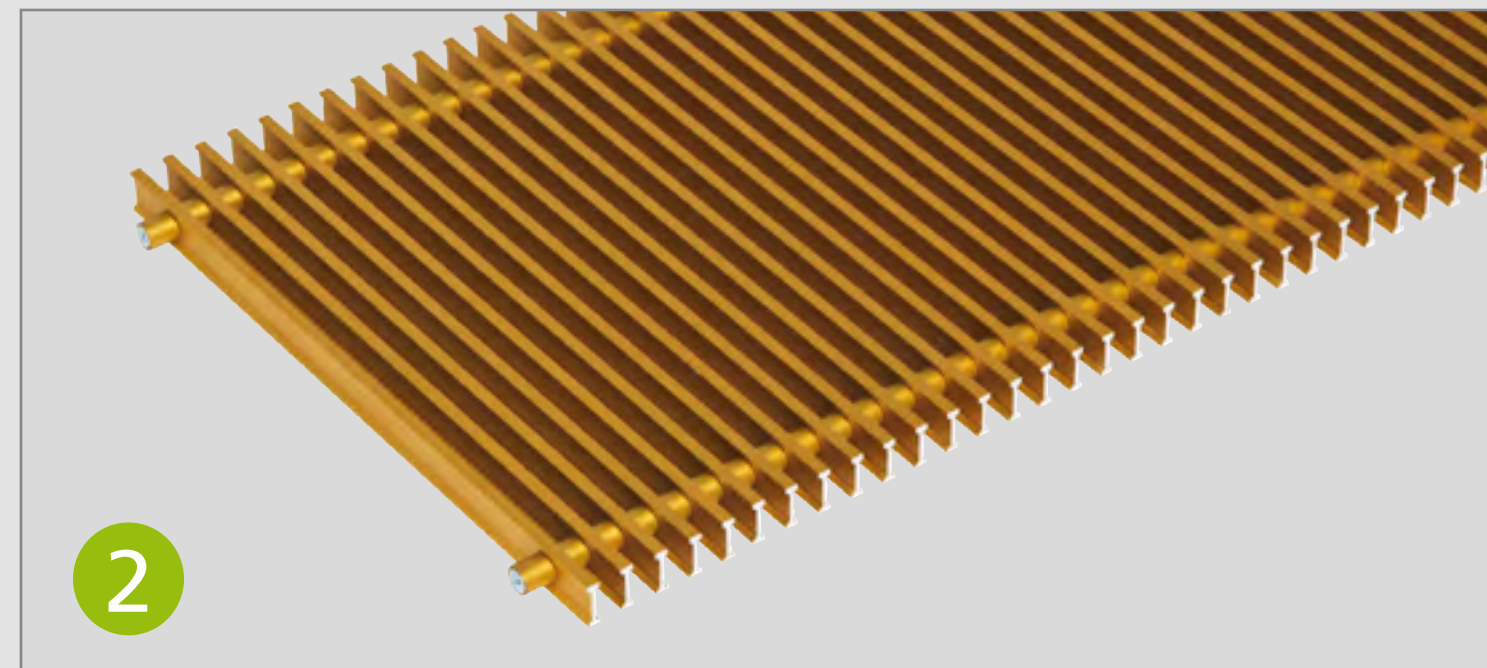
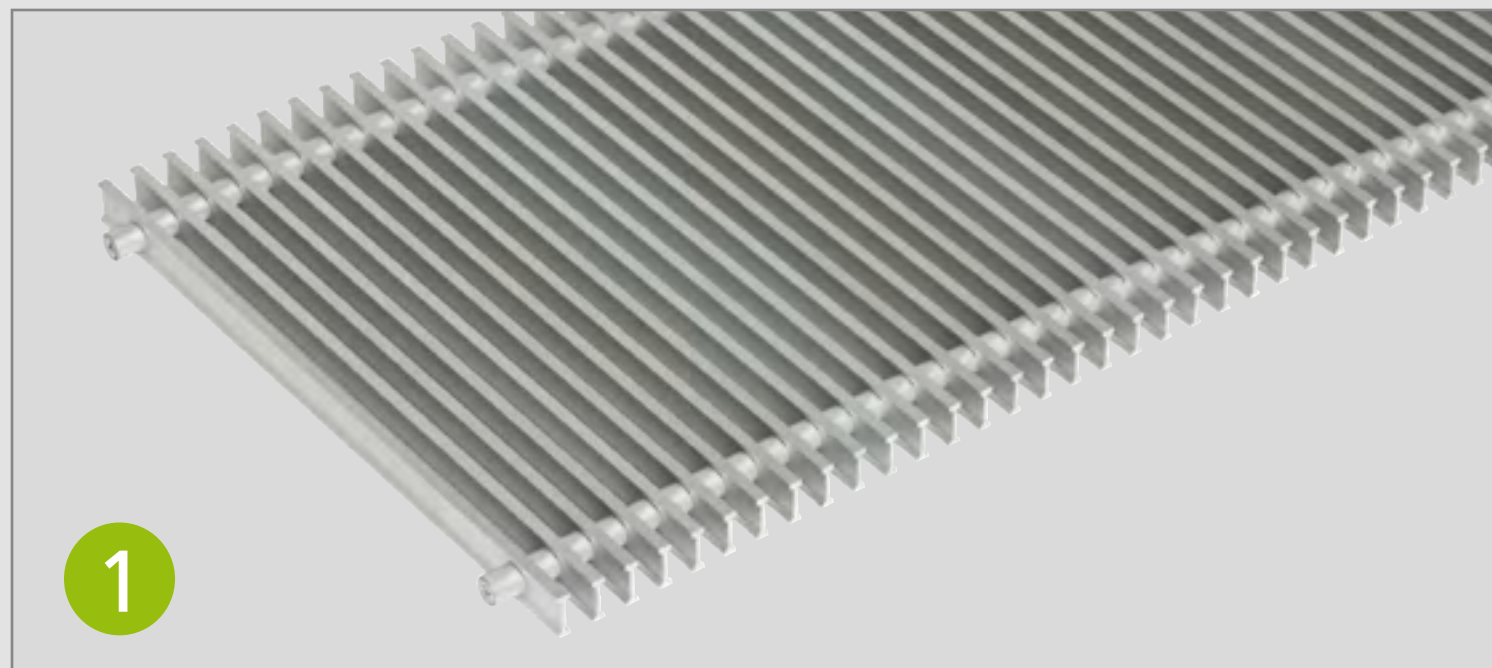




Eurokonus valve connection

- For easy connections
- Saves installation time





- 1 Aluminium, natural anodised
- 2 Aluminium, brass anodised
- 3 Aluminium, bronze finish
- 4 Aluminium, black anodised
- 5 Aluminium, painted DB 703
- 6 Stainless steel

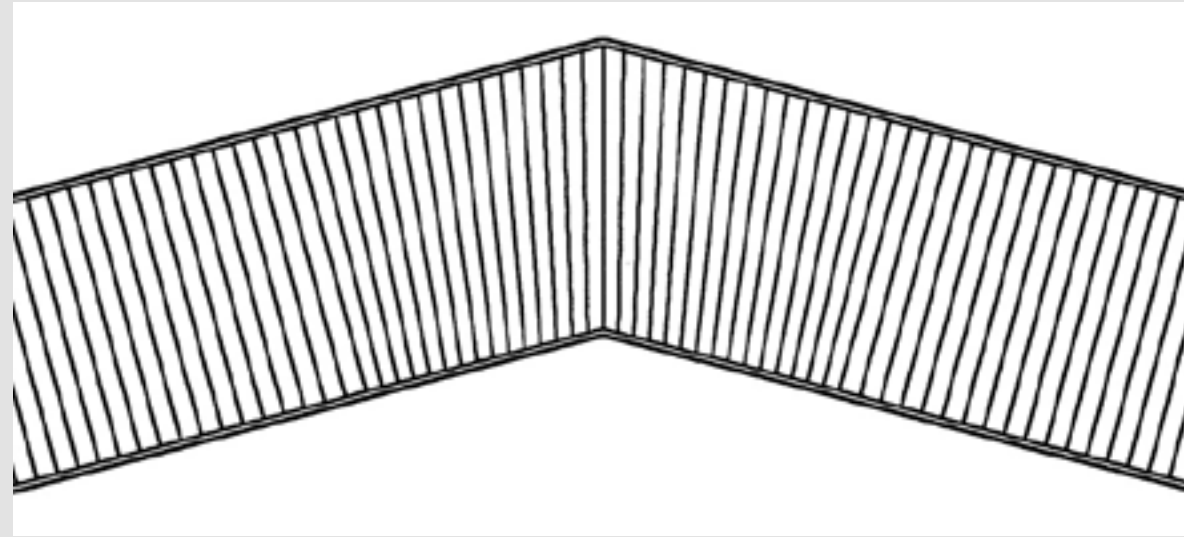
Choice of grilles

(examples shown are roll-up grilles)

More grille finishes at
Kampmann.ca/grilles

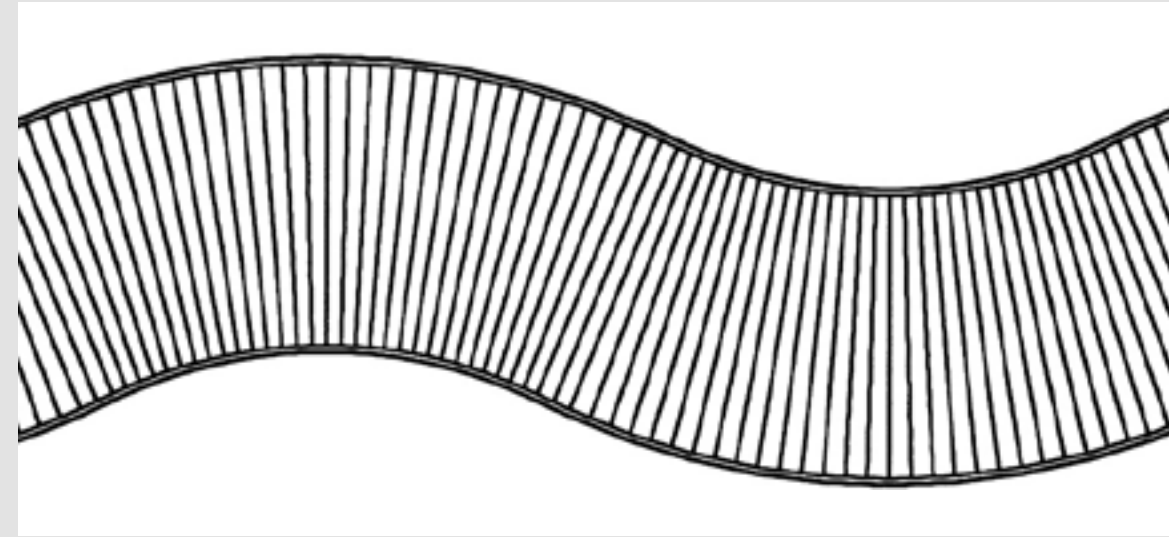


We can even cope with challenging sites with ease with our range of possible shapes and sizes.
The following options are possible:



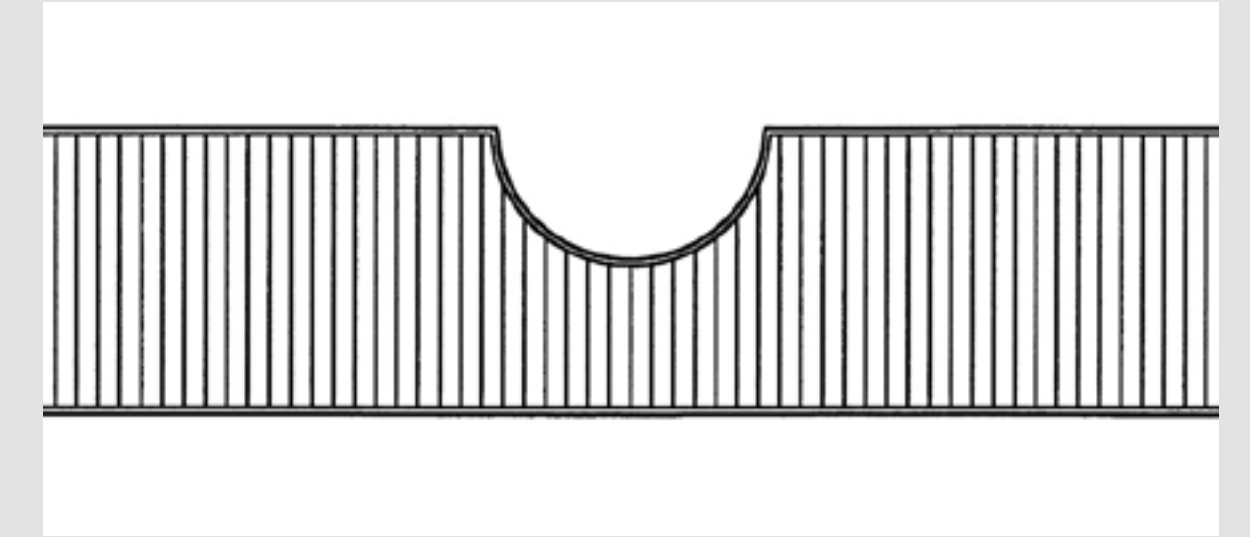
Mitred corners

- ▶ Any angle possible
- ▶ Curved



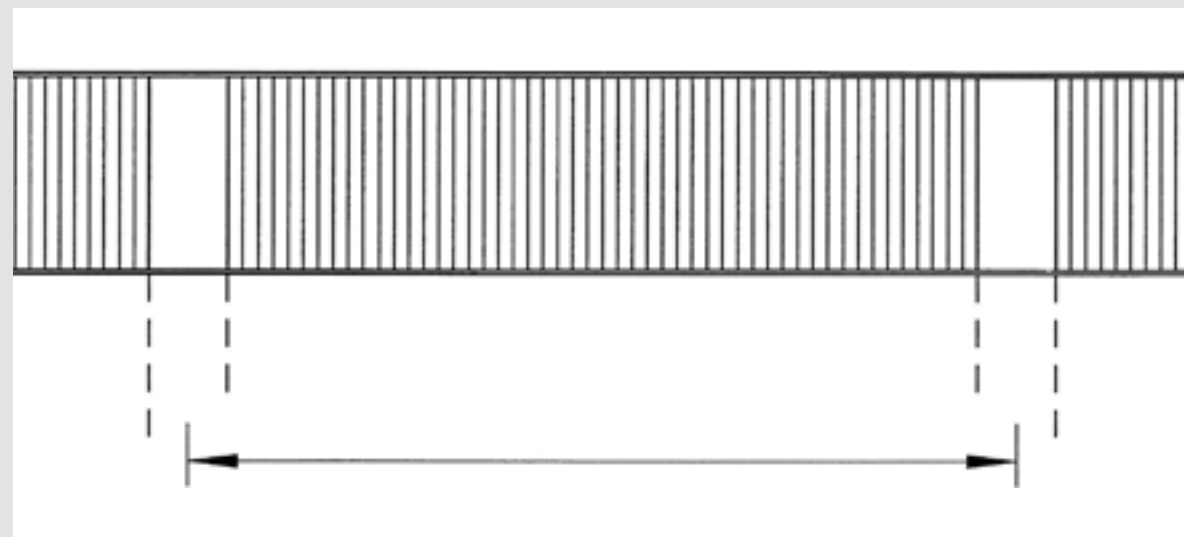
Curves

- ▶ Design of all components in a curved shape



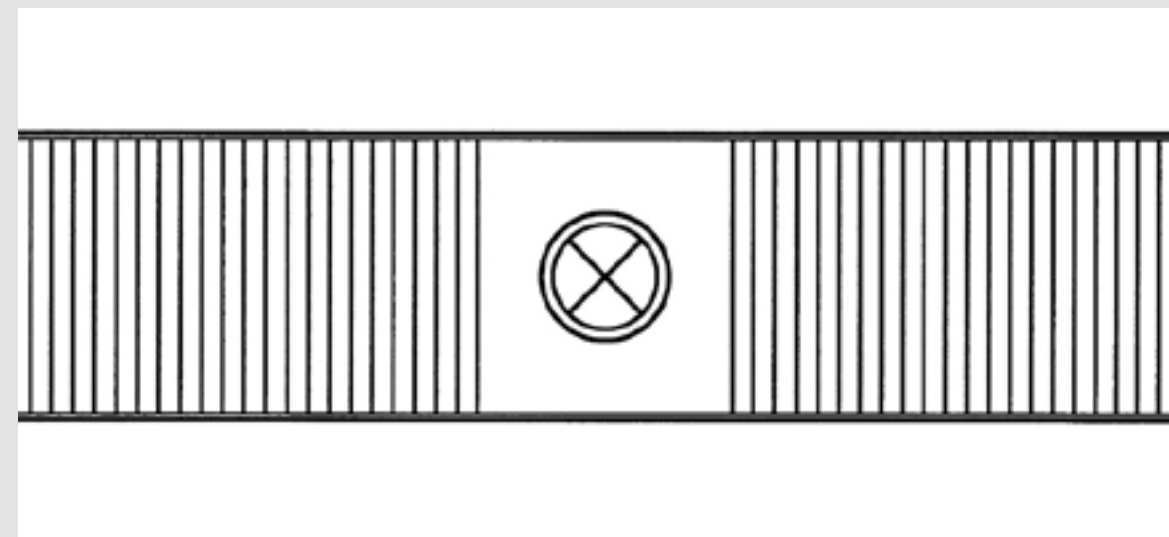
Cut-outs in the grille itself

- ▶ Integration of building parts, such as columns, mullions, etc.



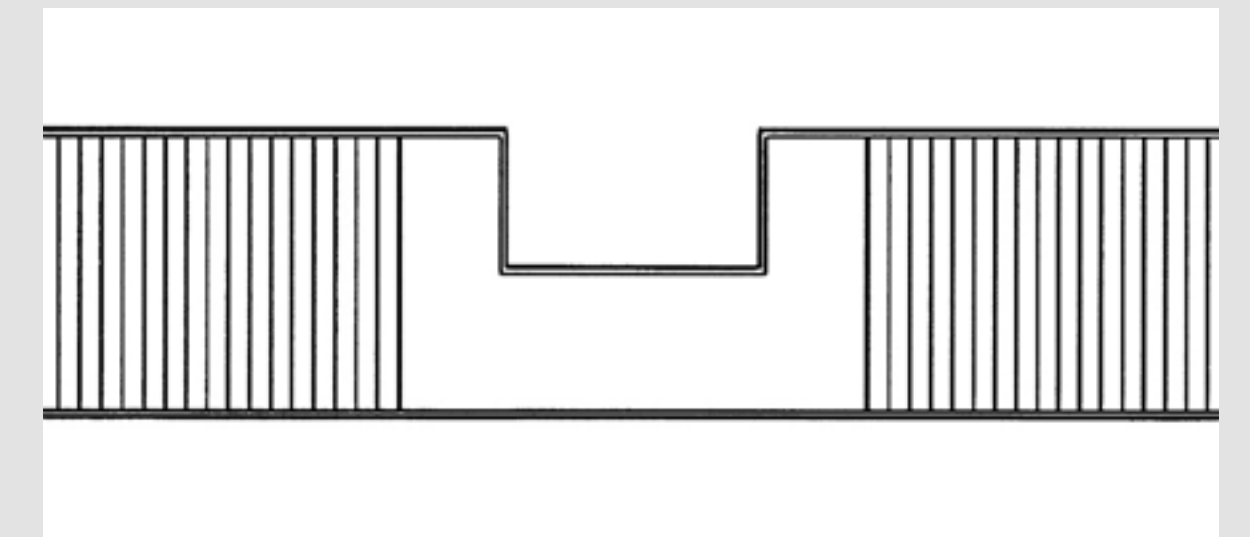
Cover plates at mullion positions

- ▶ Polygonal shapes along building façade



Cover plate for an electrical installation

- ▶ Luminaires
- ▶ Sockets



Cut-outs with a cover plate

- ▶ Integration of building parts, such as columns, mullions, etc.



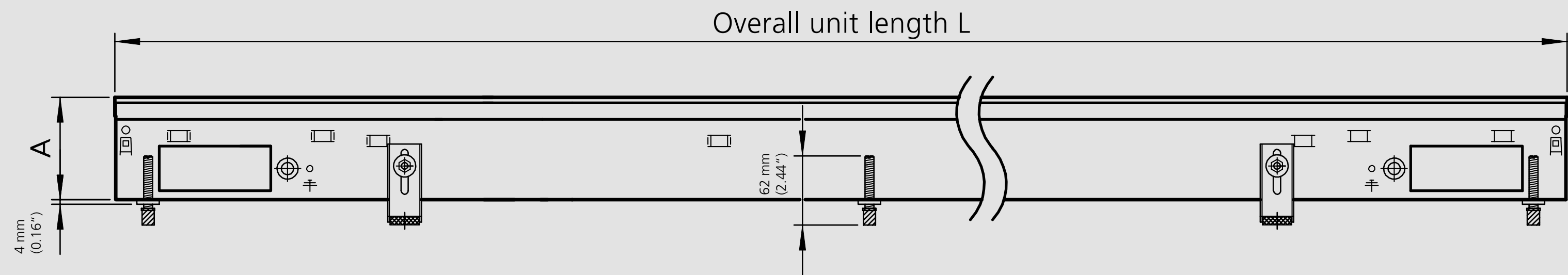
Heat output with unit lengths of 800 mm (31.5") to 5000 mm (196.85"), room air temperature 20 °C (68 °F)

Water temperatures		Unit height		Katherm NK 137 Width 5.4"	Katherm NK 182 Width 7.16"		Katherm NK 232 Width 9.13"		Katherm NK 300 Width 11.81"		Katherm NK 380 Width 14.96"	
[°C]	[°F]	[mm]	["]	[BTU]	[W]	[BTU]	[W]	[BTU]	[W]	[BTU]	[W]	[BTU]
75 / 65	180 / 160	92	3.62	327 - 4073	155 – 1529	529 – 5214	187– 1820	638 – 6206	247 – 2407	842 – 8208	327 – 3193	1115 – 10887
		120	4.72	351 - 4413	192 – 1889	655 – 6442	230 – 2237	784 – 7630	317 – 3085	1081 – 10518	405 – 3950	1381 – 13468
		150	5.90	n/a	248 – 2228	846 – 7597	369 – 3321	1258 – 11324	470 – 4227	1603 – 14415	576 – 5189	1964 – 17693
		200	7.87	n/a	279 – 2513	951 – 8568	399 – 3589	1361 – 12239	532 – 4785	1814 – 16317	740 – 6658	2523 – 22702
55 / 45	167 / 149	92	3.62	266 - 3345	132 – 1295	450 – 4416	157 – 1530	536 – 5217	209 – 2036	713 – 6943	278 – 2717	948 – 9265
		120	4.72	287 - 3581	162 – 1594	553 – 5436	193 – 1881	659 – 6414	268 – 2609	914 – 8897	344 – 3353	1173 – 11434
		150	5.90	n/a	206 – 1857	703 – 6332	309 – 2778	1054 – 9473	394 – 3545	1344 – 12088	485 – 4362	1654 – 14874
		200	7.87	n/a	232 – 2084	792 – 7106	334 – 3010	1140 – 10264	445 – 4003	1517 – 13650	621 – 5590	2118 – 19062
50 / 40	140 / 122	92	3.62	150 - 1884	81 – 797	276 – 2719	95 – 922	324 – 3144	128 – 1249	436 – 4259	174 – 1697	593 – 5786
		120	4.72	157 - 1946	99 – 971	338 – 3311	116 – 1134	396 – 3865	164 – 1601	559 – 5458	213 – 2079	726 – 7090
		150	5.90	n/a	121 – 1091	413 – 3722	183 – 1650	624 – 5628	236 – 2121	805 – 7233	292 – 2629	996 – 8964
		200	7.87	n/a	134 – 1208	466 – 4118	200 – 1801	682 – 6141	264 – 2378	900 – 8109	373 – 3357	1272 – 11446
45 / 35	120 / 110	92	3.62	92 - 1167	54 – 532	184 – 1815	62 – 605	211 – 2061	85 – 831	290 – 2834	117 – 1146	399 – 3908
		120	4.72	92 - 1170	65 – 642	222 – 2190	76 – 743	259 – 2534	109 – 1065	372 – 3632	143 – 1396	488 – 4760
		150	5.90	n/a	78 – 701	266 – 2390	119 – 1069	406 – 3646	154 – 1382	525 – 4714	191 – 1723	651 – 5877
		200	7.87	n/a	85 – 766	290 – 2613	130 – 1174	443 – 4003	171 – 1541	583 – 5254	244 – 2194	832 – 7483

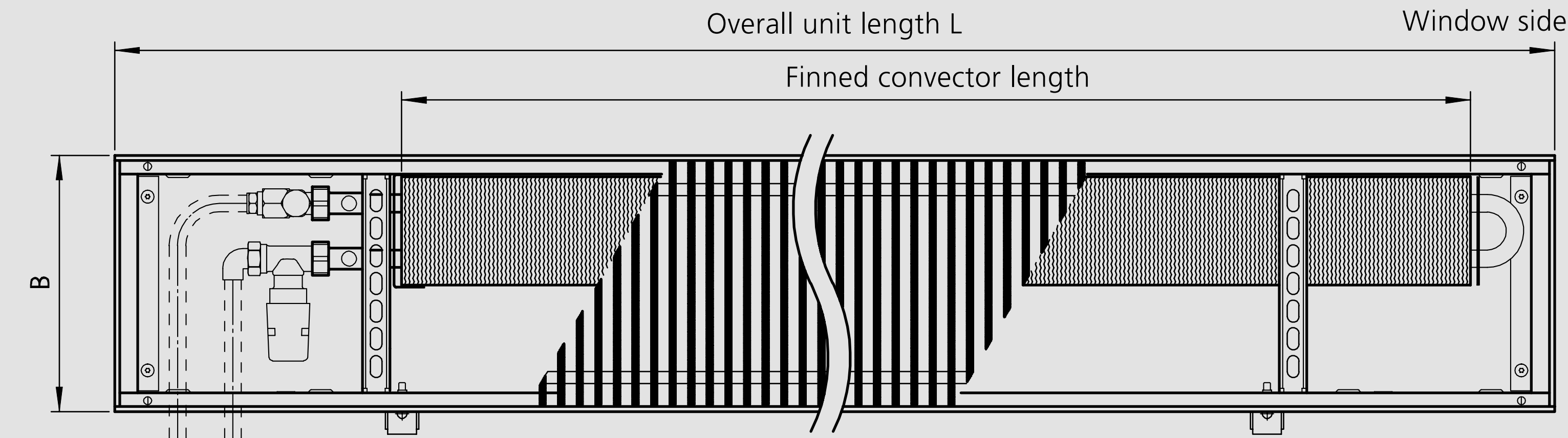
Heat outputs tested in accordance with EN 16430 Parts 1 & 2.



Dimensions



Front view, e.g. NK 232



Plan view, e.g. NK 232

	Height A	Width B
	[mm]	[mm]
Katherm NK 137	92/120/-/-	137
Katherm NK 182	92/120/150/200	182
Katherm NK 232	92/120/150/200	232
Katherm NK 300	92/120/150/200	300
Katherm NK 380	92/120/150/200	380

	Height A	Width B
	["]	["]
Katherm NK 137	6.62/4.72/-/-	5.4
Katherm NK 182	6.62/4.72/5.91/7.87	7.16
Katherm NK 232	6.62/4.72/5.91/7.87	9.13
Katherm NK 300	6.62/4.72/5.91/7.87	11.81
Katherm NK 380	6.62/4.72/5.91/7.87	14.96



Advantages



Overview



Details



Performance



Contact



Benefits for you!

Kampmann offers you the following service benefits:

- ▶ On-site consultation
- ▶ Diverse sampling
- ▶ Design support
- ▶ Site-surveys
- ▶ Training
- ▶ After sales service

Find your contact person here:

[Kampmann.ca/contact](https://kampmann.ca/contact)



Best solutions. Best support.

Kampmann.ca



Kampmann GmbH

Friedrich-Ebert-Str. 128–130
49811 Lingen (Ems)
Germany

T +49 591 7108-660

T +49 591 7108-173

E export@kampmann.de

W Kampmann.de

Kampmann Heating, Cooling, Ventilation Ltd.

600 - 890 West Pender Street
Vancouver BC, V6C 1J9
Canada

T +1 604 362 0180

F +1 604 687 1327

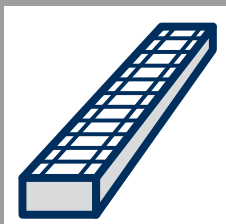
E info@kampmann.ca

W Kampmann.ca

You
Tube



Advantages



Overview



Details



Performance



Contact

KAMPMAN
Genau mein Klima.